

# The Cherokee Marsh News

*The newsletter of the Friends of Cherokee Marsh*

## Conservation Fund Reaches First Goal

*Lesleigh Luttrell*

It took just a few days longer than one year, but as of the end of March, the Cherokee Marsh Conservation Fund passed the \$10,000 mark. In fact we overshot it—and thanks to more than 60 donors, contributions to the fund total \$12,000 and are growing. To put this in perspective, when we started the fund in March of 2013, the agreement we signed with the Natural Resources Foundation of Wisconsin gave us 10 years to reach \$10,000 and we were told that most organizations took 5-10 years. But reaching one goal means that others are now in sight. Starting next year, a percentage of the monies in our endowment fund will be available for projects that support

the management, protection, conservation, restoration and appreciation of Cherokee Marsh. Continuing to grow our fund through additional contributions small and large, will mean more financial resources will be available in 2015 and beyond to preserve the marsh.

Thanks to everyone who has contributed and to all Friends of Cherokee Marsh who supported our decision to take on the challenge of starting an endowment fund.

*Watch for an invitation to a  
**CELEBRATION**  
of meeting our first goal.*

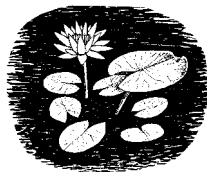
### Cherokee Marsh Art Show!

April 1 – May 31

Reception April 11, 6 – 8 pm

Lakeview Branch Library

Details on page 2.



### Earth Day Shrub Planting!

Saturday, April 19, 10 am – noon

Details on page 5.



*Cherokee Marsh by Preeti Ojha is one of the artworks you can view at the Lakeview Library this April and May. Image provided by Preeti Ojha.*

### Inside This Issue

Conservation Fund Reaches First Goal	1
Cherokee Marsh Art Show Opens	2
Oak Savanna Restoration Continues in North Unit	2
Help the Friends by Shopping at Pierce's Northside Market	4
Thank You	4
Events Calendar	5
County Exec to Discuss Water Quality	5
Membership and Contribution Form	6

# Cherokee Marsh Art Show Opens

Cherokee Marsh has long been an inspiration to artists of all types. *Raising Crane: Impressions of Cherokee Marsh* is a new exhibit of art inspired by the marsh. Over a dozen artists have contributed works using photography, acrylic, watercolor, colored pencil, mixed media, and clay.

The art is on display **April 1 – May 31** at the **Lakeview Branch, Madison Public Library**, 2845 N. Sherman Ave, Madison, Monday - Friday, 10 am – 8 pm and Saturdays, 9 am – 6 pm.

On **Friday, April 11, 6 – 8 pm**, attend a **free public reception** at the library. Meet the artists, enjoy refreshments, and help create a mosaic inspired by the work of Girl Scouts from Gompers Elementary School.

The show and reception are sponsored by the Northside Artists Group (NSAG) and the Friends of Cherokee Marsh. Founded in 2005, NSAG brings together visual artists on Madison's Northside to share their work and help build community.

# Oak Savanna Restoration Continues in North Unit

*Jan Axelson*

If you've visited the North Unit of Cherokee Marsh Conservation Park this spring, you may have noticed that some areas have a different look. This winter, Madison Parks has been continuing its project to restore oak savanna and open oak woods in targeted areas.

Oak savanna, which once thrived over much of Dane County, is a landscape of grasses, sedges, and flowers with scattered oaks. In an oak savanna, the canopy typically shades 10–50 percent of the ground cover, and the trees are spaced widely enough to be open grown and not constricted by branches of other trees.

The oaks and other plants of oak savannas can withstand fire. Without fire or other management activities, aggressive and mostly non-native shrubs such as buckthorn and honeysuckle choke out the native grasses, flowers, and young oaks and create dense thickets that are of little value to wildlife.

In 2011, Parks management set a goal to restore up to 50 acres of oak savanna in Cherokee Marsh Conservation Park's North Unit at the end of N. Sherman Ave over 5–7 years. Restoration activities, under the supervision of Conservation Resource Supervisor Russ Hefty, include forestry mowing to remove brush, tree thinning to open the canopy, and sowing native grasses and flowers.

Parks selected seven long-neglected areas to restore. (See map on page 3.)

Area 1, at the former southern boundary of the park, contained historic open grown oaks along with white oaks planted 30 years ago to provide screening for expected development to the south. The development never occurred, and today the area is part of the conservation park. Thinning of these the trees has improved the habitat connection between the restored prairies to the north and south. The original open grown oaks remain along with selected younger oak, hickory, hackberry, and hawthorn.

Area 2, in the recently acquired Fifth Addition on the south end of the park, was probably used as pasture until



*On open grown oaks like these, the branches have room to spread wide. Photo by Jan Axelson.*

around 1960. Trees have been removed to restore the oak savanna. Many of the open grown trees visible in a 1937 aerial photo are still present today.

Area 3, between Lu's Pond to the east and prairie to the west, was thinned to provide room for open grown oak, and some younger oaks and hickories.

Area 4 is on the north side of a glacial drumlin and will be restored to prairie and oak savanna.

In Area 5, just west of the parking area, buckthorn, honeysuckle, and some trees have been removed and grasses, sedges, and flowers have been sown. In this area, additional tree thinning will result in a 50–70% canopy of oak, hickory, and hawthorn.

In Area 6, near the north end of the east boardwalk, oak saplings have been thinned to maintain the oak savanna and wet prairie.

In Area 7 in the north end of the park, trees will be removed to free the open grown oaks and to restore oak savanna with some hickories.

*continued on page 3*

# Oak Savanna

continued from page 2

In a statement to the Park Commissioners, the Friends of Cherokee Marsh directors said:

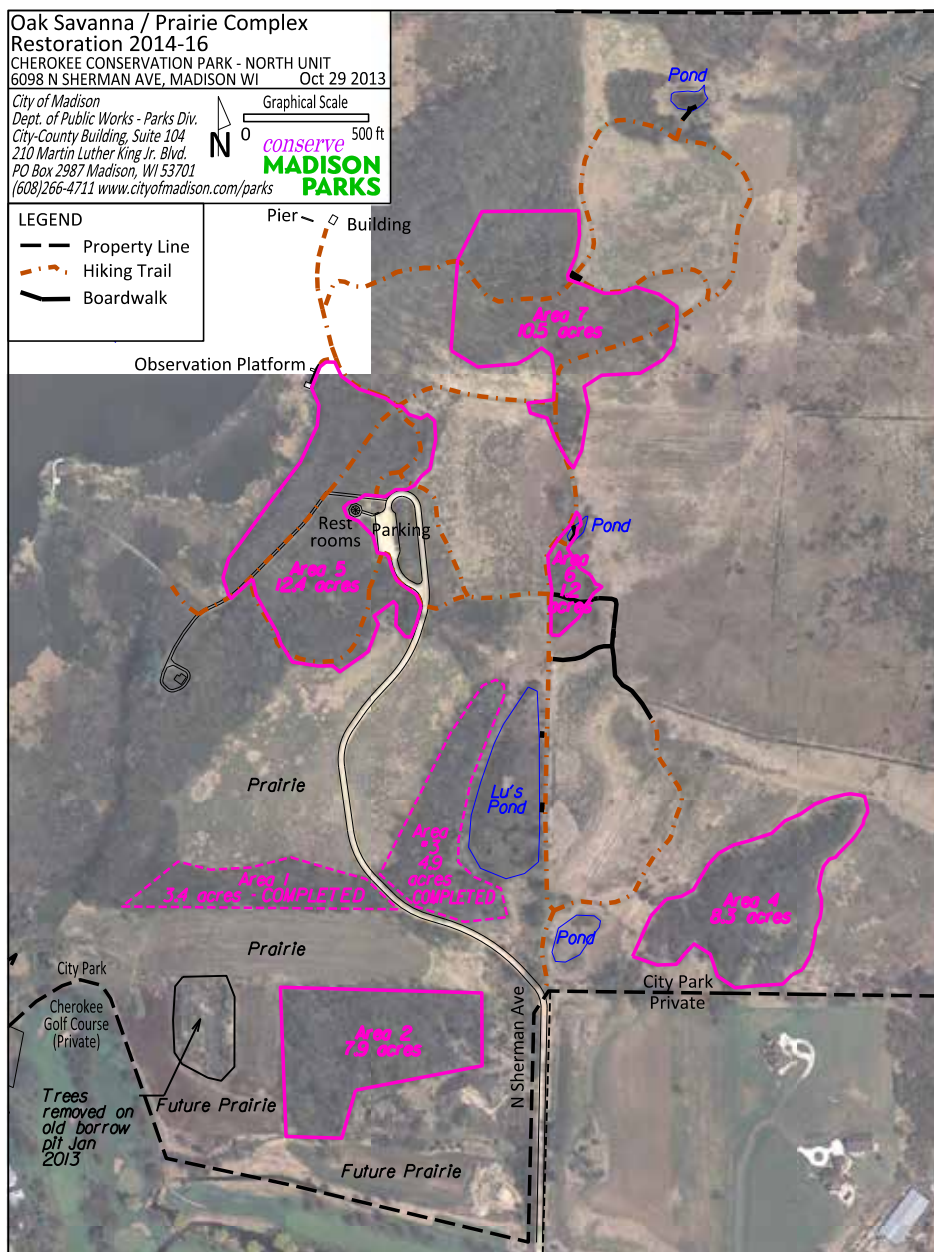
*The Friends of Cherokee Marsh support Russ Hefty's proposed activities to continue restoring oak savanna and prairie in upland areas of Cherokee Marsh Conservation Park.*

*Restoring these areas is consistent with the City's intent that our Conservation Parks "preserve Madison's native landscapes, its plant and animal populations for citizens' careful use and full enjoyment." (Ordinance 8.40(1)(b))*

*Prairie and oak savanna, including open oak woods,*

*once dominated Dane County but are now rare. Without management, areas suitable for prairie and oak savanna become choked with aggressive shrubs and trees that form dense thickets and crowd out native grasses, sedges, and flowers as well as young oaks and hickories.*

*In some locations in the park, recent forestry mowing, burning, tree removal, and seeding of native species has shown what good management can achieve. Continuing this work is the next step in restoring other long-neglected areas to more closely match our beautiful and treasured native ecosystem.*



Madison Parks is restoring oak savanna and open oak woods in seven areas in the North Unit. Map provided by Madison Parks.

# Help the Friends by Shopping at Pierce's Northside Market

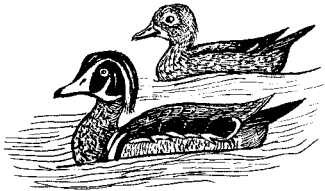
Do you shop at Pierce's Northside Market? Do you know that you can designate the Friends of Cherokee Marsh to receive donations from Pierce's Community Foundation?

When you do so, every time you shop at Pierce's and show your card, the Friends receive credit. Each quarter, the foundation donates in proportion to the amounts spent by cardholders who have selected a group. Although we've received donations in the past, recently we've been just under the threshold. With a few more shoppers, we can once again benefit from this generous program.

To ask the foundation to direct donations to the Friends of Cherokee Marsh, **obtain a Pierce's rewards card** if you don't have one and **request the Friends of Cherokee Marsh (group #1272) as your group**. Then present your card whenever you shop. Your account will also earn points that you can use for free products and discounts.

Pierce's Market is in the Northside TownCenter at the corner of Northport Dr. and Sherman Ave.

You can get a rewards card at the store or apply online: [piercesnorthsidemarket.com/loyalty.php?page=enroll](http://piercesnorthsidemarket.com/loyalty.php?page=enroll)



*Thinning the trees at the former southern boundary of the North Unit has improved the habitat connection between the prairies to the north and south. Photo by Jan Axelson.*

# Thank You

Thank you to two new Founding Donors to the Cherokee Marsh Conservation fund, **Kris Knight** and **James Mand**. Founding donors are those who have contributed at least \$100 in the first year of the fund.

Thank you also to these members, who used our membership form's *in honor of/in memory of* options to make the following donations in addition to their memberships:

**Julie Olsen and Tim Valdez**, \$10 in memory of **Dr. Robert O. Burns**

**Jim and Katie Krause**, \$75 in honor of the **Krause Family Foundation**

## Keep in touch!

"Like" our Facebook page:

[www.facebook.com/friends.of.cherokee.marsh](http://www.facebook.com/friends.of.cherokee.marsh)

Join our email group:

[www.groups.yahoo.com/group/cherokeemarsh](http://www.groups.yahoo.com/group/cherokeemarsh)

## Friends of Cherokee Marsh

PO Box 3390

Madison WI 53704

[info@CherokeeMarsh.org](mailto:info@CherokeeMarsh.org)

[www.CherokeeMarsh.org](http://www.CherokeeMarsh.org)

*To protect, preserve, and restore the beauty, value, and health of the Cherokee Marsh and upper Yahara River watershed.*

### Directors

Jan Axelson (President)

Timothy Baker

Janet Battista (Vice President)

Dana Erlandsen

Lesleigh Luttrell (Treasurer)

Paul Noeldner

Justin Sargent

Muriel Simms

Dick Walker

Dorothy Wheeler (Secretary)

### Advisor

Don Hammes

# Events Calendar

Don't miss out on last-minute events that don't make it into this calendar. For the latest event information, *Like* us on Facebook, join our email group, or visit [CherokeeMarsh.org](http://CherokeeMarsh.org).

If you want to be added to our email notification list for volunteer events, email [info@cherokeemarsh.org](mailto:info@cherokeemarsh.org).

## Raising Crane: Impressions of Cherokee Marsh

April 1 – May 31

Reception, April 11, 6 – 8 pm

Lakeview Branch Library, 2845 N. Sherman Ave.

Art show; see page 2 for details.

## Monthly Bird and Nature Walks

Sunday, April 6, 1:30–3:00 pm

AND

Sunday, May 4, 1:30–3:00 pm

AND

First Sunday of every month

Cherokee Marsh Conservation Park, North Unit

Free, family-friendly bird and nature walks. Sponsored by the Friends of Cherokee Marsh, Madison Parks, and Madison Audubon Society.

## Garlic Mustard Pull

Sunday, April 6, noon – 3 pm

Cherokee Marsh Conservation Park, North Unit

Make room for wildflowers by helping to pull invasive garlic mustard. No experience necessary. Refreshments provided. Sponsored by the Madison Area Weed Warriors.

## Help with a Prescribed Burn

Tuesday, April 8, 10 am, may work through lunch  
(Rain date April 9)

Yahara Heights County Park, Caton Ln entrance

Bring drinking water and a hat. Wear fire-safe clothing (no nylon). Sign up with Rhea: 608-224-3601. Sponsored by Dane County Parks.

## Woodcock Walk

Friday, April 11, 6:30 – 8:30 pm

Cherokee Marsh Conservation Park, North Unit

Observe the courtship flight of woodcock and snipe. See cranes and spring migrants. Sponsored by Madison Audubon and the Friends of Cherokee Marsh.



## Earth Day Shrub Planting

Saturday, April 19, 10 am – noon

Cherokee Marsh Conservation Park, North Unit

Help plant native shrubs in the recently acquired Fifth Addition at the south end of the park. Sponsored by Madison Parks. Sign up to volunteer:

[surveymonkey.com/s/EarthDayVolunteer2014](http://surveymonkey.com/s/EarthDayVolunteer2014)

## Warbler Walk

Thursday, May 15, 6:00 – 8:00 am

Cherokee Marsh Conservation Park, North Unit

Look for colorful warblers and other migrating birds. Sponsored by Madison Audubon and the Friends of Cherokee Marsh.

## Evening at Cherokee Marsh

Wednesday, May 21, 6:30 – 8:30 pm

Cherokee Marsh Conservation Park, North Unit

View spring wildflowers and learn about recent restoration efforts. Sponsored by Madison Audubon, Madison Parks, and the Friends of Cherokee Marsh.

## Locations

Cherokee Marsh Conservation Park, North Unit

6098 N. Sherman Ave. Travel north on N. Sherman Ave. to the main parking lot at the end of the gravel road.

Yahara Heights County Park, Caton Ln. entrance

Heading north from Madison on HWY 113/Northport Dr., just past HWY M, turn right on River Rd, then right on Riverview Dr, and right on Caton Ln. For volunteer events only, drive into the park from the end of Caton Ln.

# County Exec to Discuss Water Quality

County Executive Joe Parisi is scheduled to attend our April board meeting to discuss what Dane County is doing to protect water quality. The meeting is Wednesday, April 16, 5:30 pm, at the Lakeview Branch Library, 2845 N. Sherman Ave. All of our meetings are open to the public.

If you would like to attend the April meeting to hear Joe Parisi speak, it's helpful if you let us know by emailing [info@cherokeemarsh.org](mailto:info@cherokeemarsh.org).

# Membership and Contribution Form

## YES! I want to be a Friend of Cherokee Marsh.

The Friends of Cherokee Marsh are dedicated to protecting, preserving, and restoring the beauty, value, and health of Cherokee Marsh and the upper Yahara River watershed. Your contribution of time, talent, or funds will help preserve and restore the crucial wetland ecosystem of Cherokee Marsh.

Memberships are per calendar year. New memberships paid after June 30 are valid through the current and following year.

- Individual \$15
- Family \$25
- Mallard \$50
- Additional donation \$ \_\_\_\_\_
- Additional donation \$ \_\_\_\_\_ in honor of \_\_\_\_\_
- Additional donation \$ \_\_\_\_\_ in memory of \_\_\_\_\_
- Osprey \$100
- Sandhill Crane \$250
- Great Blue Heron \$500

## Here is my additional donation to the Cherokee Marsh Conservation Fund.

- \$25
- \$50
- \$100
- \$ \_\_\_\_\_

Find out more about the Cherokee Marsh Conservation Fund at [CherokeeMarsh.org/conserve](http://CherokeeMarsh.org/conserve)

Name \_\_\_\_\_

Family member(s) \_\_\_\_\_

Address \_\_\_\_\_

City/State/Zip \_\_\_\_\_

Email \_\_\_\_\_ Second (family member) Email \_\_\_\_\_

Phone \_\_\_\_\_  Don't publicize my financial support.

I'm interested in helping with:

- Field work
- Publicity
- Tours
- Education
- Board/Committees

Other \_\_\_\_\_

Please mail this form and payment to:

Friends of Cherokee Marsh, PO Box 3390, Madison WI 53704

Thank you for joining us in our effort to protect this valuable resource!

The Friends of Cherokee Marsh is a Federal tax-exempt charitable organization under section 501(c)(3) of the Internal Revenue Code.