

The Cherokee Marsh News

The newsletter of the Friends of Cherokee Marsh

New entrance and trails proposed for North Cherokee

Jan Axelson

At a public meeting on January 21, Madison Parks presented proposals for improvements to Cherokee Marsh Conservation Park's North Unit.

Many of the improvements are at the south end of the unit, where Parks has begun restoring the 46 acres added to the park in 2008 and 2010. (See map on page 2.)

Parks has proposed moving the entrance gate about a half mile to the south, near the current park boundary. Doing so requires obtaining permission to formally abandon the half mile of public roadway between the current gate and the new location. The road segment would remain but would be inside the gate, which the park caretaker closes one hour after sunset and reopens in early morning.

Just inside the gate will be a parking area with room for 15 cars as well as school buses. The location will have an information kiosk like the one at the current main parking lot. Inside the parking area, a gate will prevent unauthorized vehicles from accessing the trails, similar to the gate at the main parking lot.

Also proposed are about 1.75 miles of new trails in two areas.

The new parking lot will offer access to about 3/4 mile of new trails in the recent additions to the park. One trail will extend to Burning Wood Way in the Cherokee Park neighborhood as detailed in the Cherokee Special Area Plan adopted by the Common Council in 2007. Another trail about 1/4 mile long will be mowed just east of the entrance road to connect the new trails to the existing trail system.

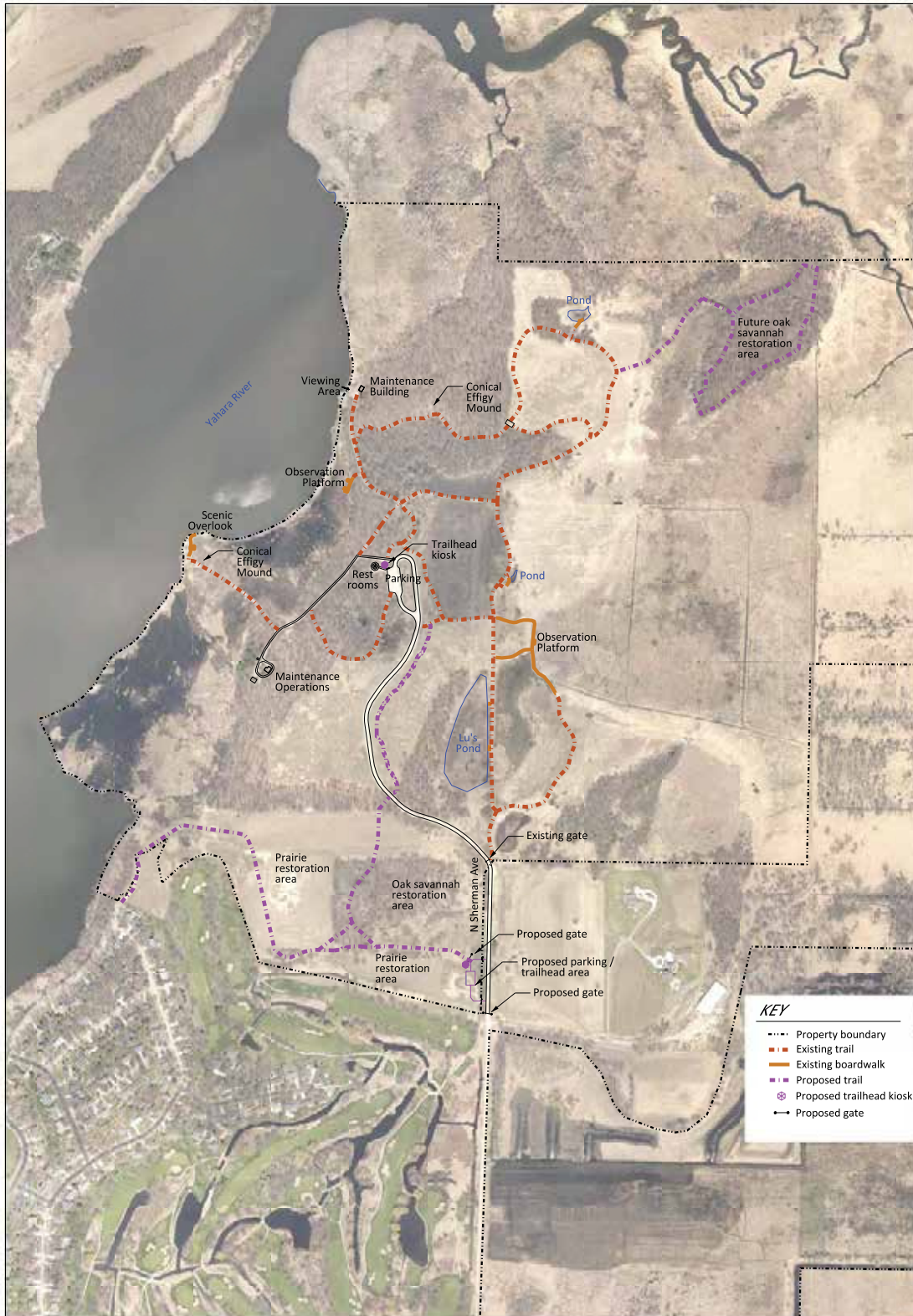
At the north end of the park and east of the current trail system, Parks is proposing a trail loop of about 3/4 mile to "Cherry Island," an area of high ground surrounded by wetlands. Historically, the spot had many cherry trees. An old farm trail once provided access to the area. Parks will seek permission from the Wisconsin Department of Natural Resources to repair the farm trail for use as a public trail and to enable access for restoration work.



Bee expert Hannah Gaines Day explains how we can help our native bees. (See page 3). Photo by Janet Battista.

Inside This Issue

New entrance and trails proposed for North Cherokee	1
Canoe/kayak launch upgrade proposed for Cherokee Park	3
How to help the bees, directors elected at annual meeting	3
Conservation Fund tops \$16,000, tours scheduled	4
Thanks for Renewing	4
Educational series presents environmental topics	5
2014 Financial Statement	5
Events calendar	6
Volunteers are key to success of candlelight walk	6
Membership and contribution form	7



<p>City of Madison Department of Public Works PARKS DIVISION City-County Building, Suite 104 210 Martin Luther King Jr. Blvd. PO Box 2987 Madison, WI 53701-2987</p> <p>Graphical Scale 0 600 ft</p> <p>MADISON PARKS</p>	<p>SHEET TITLE: TRAILHEAD LAYOUT</p> <p>PROJECT: PROPOSED IMPROVEMENTS CHEROKEE MARSH NORTH UNIT</p> <p>LOCATION: CHEROKEE CONSERVATION AREA 608 N SHERMAN AVE, MADISON, WI 53704</p>	<p>ITEM _____ DATE 01-21-2015</p> <p>Drawn by: KK</p> <p>Approved by: _____</p>	<p>PUBLIC WORKS PROJECT #: ####</p> <p>SHEET NUMBER:</p>
---	--	---	---

This map shows the proposed new entrance and added trails at Cherokee Marsh Conservation Park's North Unit. Map provided by Madison Parks. You can also view the map at cherokeemarsh.org/files/MP8_Cherokee_North.pdf

Canoe/kayak launch upgrade proposed for Cherokee Park

Jan Axelson

At January 21st's public meeting, City Engineering staff also described an improved canoe and kayak launch for Cherokee Park, located along Burning Wood Way in the Cherokee Park neighborhood. The park has a popular canoe/kayak launch that is part of Dane County's Yahara Waterways Trail.

Prompted by requests from the neighborhood for an improved launch and concerns of Friends of Cherokee Marsh members about shoreline erosion at the site, alder Anita Weier requested and received City of Madison funding to upgrade the informal launch.

The proposed launch will use a product called geocells that will prevent erosion and form a durable, non-slip ramp for launching and canoes and kayaks. Geocells are open, diamond-shaped "cells" made of high-strength polyethylene and connected in a sheet, or web, that forms a honeycomb structure. The cells will be 4 inches tall.

To build the launch, the contractor will excavate to create an even slope and lay geotextile fabric to keep the rocks from sinking into the soil. Then the geocell sheets will be laid, anchored in place, and the cells will be filled with small rocks and gravel.

The proposed launch will be 12 ft wide at the top and 18 ft wide at the bottom (underwater). The ramp will descend a total of just over 2.5 ft beginning about 10 ft inland from the current shoreline and extending about the same amount into the water. The cost is about \$15,000. Engineering estimates that the launch may need maintenance every 3–5 years to replace stones and gravel.

Parks will request a permit from the Wisconsin Department of Natural Resources for the work.

This launch will be the second one Parks is installing using geocells, following a similar launch to be installed on Wingra Creek at Quann Park .

To reach Cherokee Park, from Wheeler Rd., turn north onto Comanche Way and where Comanche Way dead ends, turn left onto Burning Wood Way. The launch site is at Mosinee Ln.

To find out more about the Yahara Waterways Trail see:

danewaters.com/yaharawatertrail.aspx

For more about geocells, see:

prestogeo.com/geocells

How to help the bees, directors elected at annual meeting

Did you know that Wisconsin has 500 species of native bees?

One way we can help our native bees is to plant more flowers. Native flowers are best because the bees and flowers have evolved together.

If you have the space, a good goal is to have at least three different types of flowers blooming at all times from spring through fall, but even small patches of blooms are helpful.

These are just a few of the things we learned from Dr. Hannah Gaines Day of UW-Madison's Department of Entomology at our annual member meeting on January 31.

Also at the meeting, Ruth Oppedahl of the Natural Resources Foundation of Wisconsin gave an update on the Cherokee Marsh Conservation Fund (see page 4), Lesleigh Luttrell presented the treasurer's report (see page 5 for our year-end financial statement) and Dana Erlandsen reviewed our activities and achievements of 2014 and looked ahead to bigger and better things for the coming year, including our first-ever barge tour of the marsh. (See page 4.)

Elected to continue as directors for 2015-2016 were Timothy Baker, Janet Battista, Dana Erlandsen, Lesleigh Luttrell, and Justin Sargent. Elected for a 1-year term was new director Jim Krause. Continuing directors Jan Axelson, Paul Noeldner, Muriel Simms, Dick Walker, and Dorothy Wheeler are in the middle of their 2-year terms and thus were not up for election.

After the member meeting, the directors met briefly to elect officers for the coming year. Continuing in their positions are President Jan Axelson, Vice President Janet Battista, Treasurer Lesleigh Luttrell, and Secretary Dorothy Wheeler.

Thanks to these generous Northside businesses for providing our popular door prizes: Altered States Alterations, Benvenuto's Italian Grill, Coffee Gallerie, D & S Bait-Tackle, Jim's Meat Market, Jung Garden Center, Northside True Value, and Sherman Plaza Hairstyling.

To learn more about how to help the bees, visit the Xerces Society for Invertebrate Conservation at xerces.org.

Conservation Fund tops \$16,000, tours scheduled

Thanks to your generous contributions, the Cherokee Marsh Conservation Fund ended 2014 with a balance of \$13,856.42. *Plus*, we've received \$2515 in additional contributions this year.

In July, in consultation with the Wisconsin Department of Resources, the Natural Resources Foundation will decide whether to make a distribution of around \$1,100 to support conservation at Cherokee Marsh or keep the money in the fund to enable larger distributions in future years.

We're excited to announce that 2015 will see *two* special tours that will benefit the Cherokee Marsh Conservation Fund.

June 13's tour is *Cherishing Cherokee: respecting and restoring a valuable estuary and wetland environment*.

Tour the upper Yahara River at Cherokee marsh by barge. Learn how this valuable fish and fowl habitat have changed and are changing for the better through volunteer and partner efforts.

The estuary is key in controlling the downstream health of the four lakes. Unique partnerships have identified what can and should be done to provide form and function to this wetland. Learn how fish can be used and managed to restore ecological fitness while also providing economic and food opportunity.

You'll have opportunities to see a variety of bird species

and enjoy the peace of quiet places uniquely nested near an urban setting.

The tour leaders will be Kurt Welke, Fisheries Manager for the Wisconsin Department of Natural Resources and Timothy Baker from the Friends of Cherokee Marsh.

September 12's tour is *Explore the Wild Lands of Cherokee Marsh*.

Hike off trail through a large, diverse peat wetland with sedge meadows, fens, emergent marshes, and an oak savanna island. View a recent project where more than 3000 ft of ditches were plugged to begin restoring the hydrology and native vegetation. Visit an oak savanna island undergoing restoration to benefit red-headed woodpeckers.

Tour leaders will be Russ Hefty, Conservation Resource Supervisor for Madison Parks and Jan Axelson from the Friends of Cherokee Marsh.

Both trips will be offered through the Natural Resources Foundation (NRF) of Wisconsin and will be fundraisers for the Cherokee Marsh Conservation Fund.

NRF members get priority for the tours, which tend to fill quickly. If you're not a member, join now to receive the tour catalog, typically released in March. Contact the NRF (wisconservation.org) at (866) 264-4096 or info@wisconservation.org



Thanks for Renewing

Thank you to all who have renewed their memberships for 2015. Thanks especially to those who added a contribution to the Cherokee Marsh Conservation Fund (see above) and to these members who contributed a total of \$600 to support transportation for field studies by local schoolchildren in Cherokee Marsh Conservation Park: Jan Axelson, Janet Battista, Sally Bowers, Tom and Sue Howe, Kris Knight, Jeff and Arlene Koziol, Lesleigh Luttrell, and Julie Melton.

If you haven't renewed or would like to join the Friends, please take a minute to fill out and mail in the form on the last page of this newsletter or go to CherokeeMarsh.org to renew online.



A river otter made this "slide" on the upper Yahara River this winter. Photo by Jan Axelson.

Keep in touch!

"Like" our Facebook page:

www.facebook.com/friends.of.cherokee.marsh

Join our email group:

www.groups.yahoo.com/group/cherokeemarsh

Educational series presents environmental topics

The Clean Lakes Alliance sponsors a monthly “Yahara Lakes 101” educational event open to the public. Each event features a different expert. Enjoy a presentation and questions and answers over coffee and pastries with Lake Mendota as the backdrop.

The location is Bluephies Café at Verex Plaza, Level B, 150 E. Gilman St in Madison.

Come at 7:30 am for a meet-and-greet and to enjoy coffee, pastries, and fruit. The program begins at 8 am, and class is dismissed by 9 am.

Price is \$10 at the door or *free* to Friends of the Clean Lakes Alliance (minimum donation \$35/year).

Thurs, February 12

Marty Melchior, Regional Director and Stream Ecologist at inter-fluve, on the streams-lakes connection and sediment and phosphorus loading and trapping.

Thurs, March 12

Ankur Desai, UW-Madison Atmospheric & Oceanic Sciences, on climate change and the Yahara lakes.

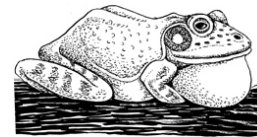
Thurs, April 9

Dick Lathrop, UW-Madison Center for Limnology and Nelson Institute for Environmental Studies, on restoring shallow lakes by reducing carp densities.

For more information or to register:

Clean Lakes Alliance

cleanlakesalliance.com



2014 Financial Statement

Balance 12/31/13	\$7,834.25	
Income		
Contributions	\$1,152.97	34 donations
Member Dues	\$2,262.83	106 memberships
Memorial/Honor Donations	\$422.37	12 donors (7 donors for Conservation Fund)
Other	\$100.86	Pierce's Foundation / Yelp Helps Event
Endowment	\$6,879.81	27 donors
Field Trip Transportation	\$420.00	5 donors
Interest	\$2.31	
Total	\$11,241.15	
Expenses		
Brochure / Display Materials	\$442.54	
Donations	\$100.00	Southern WI Butterfly Assoc (speaker honorarium)
Education (transport)	\$500.00	Madison School District (field studies transportation)
Education (other)	\$60.00	Art Marsh summer field trip
Endowment	\$7,200.00	transfer to Cherokee Marsh Conservation Fund
Events	\$622.65	annual meeting/snowshoe/art opening/lecture
Fees	\$10.00	WI nonstock corporation fee
Field Work	\$111.38	support for Fresh Start crew
Insurance	\$400.00	
Mailing Costs/PO Box Rental	\$369.34	
Organization Dues	\$100.00	Natural Heritage Land Trust
Printing	\$219.35	newsletters
Special Event	\$280.57	Endowment event
Total	\$10,415.83	
Balance 12/31/14	\$8,659.57	
Change	\$825.32	

Events calendar

Don't miss out on last-minute events that don't make it into this calendar. For the latest event information, Like us on Facebook, join our email group, or visit CherokeeMarsh.org.

If you want to be added to our email notification list for volunteer events, email info@cherokeemarsh.org.

Monthly bird and nature walks

Sunday, March 1 AND

Sunday, April 5, AND

First Sunday of EVERY month

ALWAYS 1:30 pm – 3:00 pm

Cherokee Marsh Conservation Park, North Unit, 6098 N. Sherman Ave. Travel north on N. Sherman Ave. to the main parking lot at the end of the gravel road.

Free, monthly, family-friendly bird and nature walks.

March 1: First Signs of Spring

It's time to shake off those winter doldrums and head outdoors with the kids! We will look for early spring birds (migrants) like Canada Geese, Redwing Blackbirds and Robins and listen for their cheery songs! If snow is

melting we may find spring plants (ephemerals) peeping out.

These walks are sponsored by the Friends of Cherokee Marsh, Madison Parks, and Madison Audubon Society. Contact Paul Noeldner at paul_noeldner@hotmail.com or 608-698-0104.



On display at the annual meeting were paintings made by children who visited Cherokee Marsh as part of their summer camp experience. Photo by Janet Battista.

Volunteers are key to success of candlelight walk

Despite the lack of snow for snowshoeing, a large crowd turned out for our first candlelight walk at North Cherokee on the night of January 24. Two great horned owls serenaded walkers, and the clouds cleared so the moon could make an appearance.

Putting on a candlelight event requires a small army of volunteers to assemble, set out, and light the luminaria; provide a bonfire, refreshments and supplies; and gather everything back up when the event is over.

Thanks to Janet B., Jim K., Jim H. Judy, Barbara B., Barb and Paul N., Meg M., Lesleigh L., Dana E., and Julie and Isabel V.-O. for helping make the event a success.



Candles light the way for walkers on January 24's candlelight event. Photo by Jan Axelson.

Friends of Cherokee Marsh

PO Box 3390

Madison WI 53704

info@CherokeeMarsh.org

www.CherokeeMarsh.org

To protect, preserve, and restore the beauty, value, and health of the Cherokee Marsh and upper Yahara River watershed.

Directors

Jan Axelson (President)

Timothy Baker

Janet Battista (Vice President)

Dana Erlandsen

Jim Krause

Lesleigh Luttrell (Treasurer)

Paul Noeldner

Justin Sargent

Muriel Simms

Dick Walker

Dorothy Wheeler (Secretary)

Advisor

Don Hammes

Membership and contribution form

YES! I want to be a Friend of Cherokee Marsh.

The Friends of Cherokee Marsh are dedicated to protecting, preserving, and restoring the beauty, value, and health of Cherokee Marsh and the upper Yahara River watershed. Your contribution of time, talent, or funds will help preserve and restore the crucial wetland ecosystem of Cherokee Marsh.

Memberships are per calendar year. New memberships paid after June 30 are valid through the current and following year.

- Individual \$15
- Family \$25
- Mallard \$50
- Additional donation \$ _____
- Additional donation \$ _____ in honor of _____
- Osprey \$100
- Sandhill Crane \$250
- Great Blue Heron \$500
- Additional donation \$ _____ in memory of _____

Additional donation to the Cherokee Marsh Conservation Fund:

- \$25
- \$50
- \$100
- \$ _____

Find out more about the Cherokee Marsh Conservation Fund at CherokeeMarsh.org/conserve

Additional donation to fund transportation to bring schoolchildren to the marsh for field studies:

- \$25
- \$50
- \$100
- \$ _____

Name _____

Family member(s) _____

Address _____

City/State/Zip _____

Email _____ Second (family member) Email _____

Phone _____ Don't publicize my financial support.

I'm interested in helping with: Field work Publicity Tours Education Board/Committees

Other _____

Please mail this form and payment to:

Friends of Cherokee Marsh, PO Box 3390, Madison WI 53704

Thank you for joining us in our effort to protect this valuable resource!

The Friends of Cherokee Marsh is a Federal tax-exempt charitable organization under section 501(c)(3) of the Internal Revenue Code.